

# 12 COLONEL DOW DRIVE

SCARBOROUGH, ME 04074

**\$765,000** | 4 BEDS | 3 BATHROOMS | 1 HALF BATHROOMS | 3342 SQUARE FEET

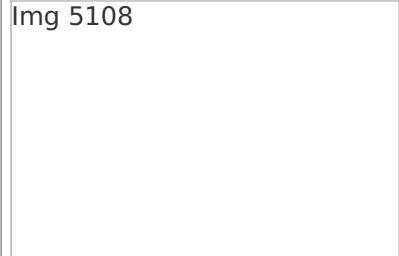
Img 5093



Img 5144



Img 5108



View Online: <http://tours.mainevideotours.com/87099>

Set back in a tranquil setting, this magnificent home offers a remarkable light-filled airy two-story family room opened to a stunning kitchen and dining room. This extraordinary floor plan provides a large loft for family entertainment, a second guest/master bedroom suite for guest or family members, FHA with A/C and a three-car heated garage.

Img 5099



Img 5143



---

## AGENT INFORMATION

### **Mary V. (Ginnie) Dolloff**

P: 207-282-7377

M: 207-615-9347

[ginnie@chamberlainhomes.com](mailto:ginnie@chamberlainhomes.com)

[chamberlainhomes.com/chamberlain\\_realty.html](http://chamberlainhomes.com/chamberlain_realty.html)

### **Chamberlain Realty**

1022 Portland Road

Saco, Maine 04072

## ABOUT MARY V. (GINNIE) DOLLOFF

I am the designated Broker for Chamberlain Realty and I am dedicated to providing the highest level of customer service to all individuals looking to sell or buy property in Southern Maine.

### PHOTOGRAPHY BY:

Maine Video Tours

[www.MaineVideoTours.com](http://www.MaineVideoTours.com)